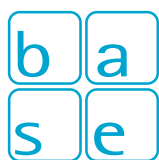




BASE LIFT KIT Product range

CLOSURE ELEMENTS

**Now with “silent” drive – for
peace and quiet in the shaft!**



We are experts in energy-efficient ventilation and
smoke extraction for lift shafts.



SYSTEM OVERVIEW

BASE LIFT KIT

Closure elements

The motor-driven damper is only opened via the adapter if an **air exchange** or **smoke extraction** is necessary. This prevents the uncontrolled escape of heat and cooling energy, thus **saving money** and **protecting the environment**.

Adapter Lift-Tronic

The Lift-Tronic adapter is the **"control centre"** for **lift shaft smoke extraction**.

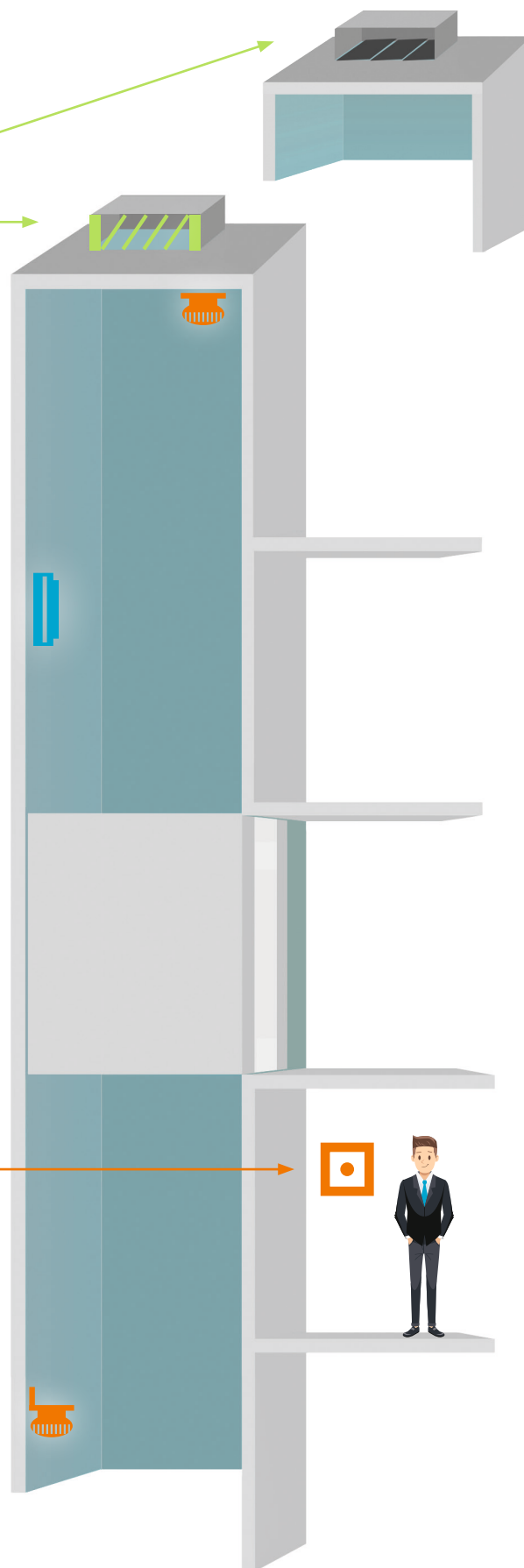
All components are connected to each other via the adapter to ensure that the damper can be opened at any time.

Manual SHEV operating panel

In addition to automatic smoke detection, lift shaft smoke extraction can also be **triggered manually** from outside.

Automatic smoke detection

Smoke is detected **automatically** via optical smoke alarms, linear fire alarms or by an aspirating smoke detector system, depending on the building requirement.



ABOUT B.A.S.E.

B.A.S.E. is known throughout Germany as being an installer for the competent, reliable installation and maintenance of lift shaft smoke extraction and ventilation systems. B.A.S.E. has been visiting its customers in Germany for more than 10 years. With the development of the BASE LIFT KIT more than two years ago, a new milestone was laid for the future of the group.

The BASE LIFT KIT impresses with its high level of flexibility and components that are perfectly aligned with each other. With the experience gained from several thousand installed systems and many years of expertise in the field of SHEV

systems for lift shafts, we have been able to develop an innovative system which perfectly complies with regulations from both lift legislation and fire protection and which impresses with its high level of flexibility at the optimum price-performance ratio. It goes without saying that the BASE LIFT KIT has also obtained all necessary building permits!

THE BASE LIFT KIT

The BASE LIFT KIT is based on the proven "Fail-Safe Principle". These systems exclusively use building-approved components which communicate with each other via a control unit. In the event of an alarm or fault, the power supply for the drive is interrupted at the closure element. A pretensioned spring in the drive then opens the closure element. After a successful alarm reset or resolution of the fault, the power supply for the drive is released and the closure element closes independently, then the system resumes operation.

The topic of safety has been redefined with the development of the BASE LIFT KIT. Standard systems for the smoke extraction and ventilation of lift shafts "only" give the closure element (multileaf damper / louvre window) a command to open without monitoring whether the element actually opens. With the BASE LIFT KIT, the control unit receives a response directly from the drive as

soon as the closure element is actually open. If this message should not arrive at the control unit, a fault signal is generated which can be forwarded to the suitable office (lift control, building technology).

MULTILEAF DAMPER

Flush mounted installation option



Product illustration



Additional modules



Louvre weather protection hood



Weather protection grill

Technical specifications:

- installation depth / height of damper 175 mm
- dimensions of damper, see table
- meets EnEV air-tightness requirements
- air-tightness class 4
- limit switch for detecting the damper position (OPEN or CLOSED)
- spring return drive (Fail-Safe) with integrated end position monitoring
- streamlined and warp-resistant slats

Additional information:

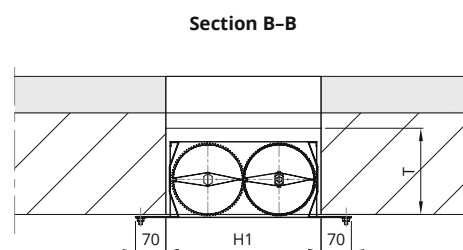
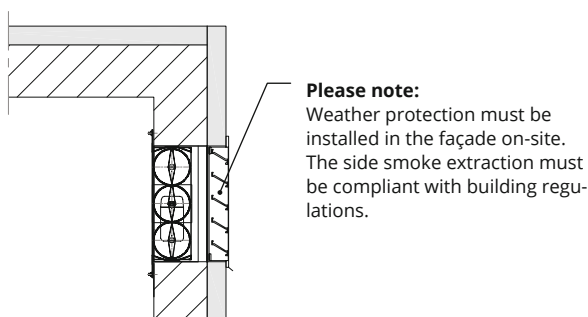
- weather protection required on-site
- installation IN existing opening
There is thus no violation of the protected area (DIN EN 81-20) in the lift shaft head
- designed as NSHEV (according to DIN EN 121010-2)
- approx. 100 mm space required around the shell opening for the installation flange



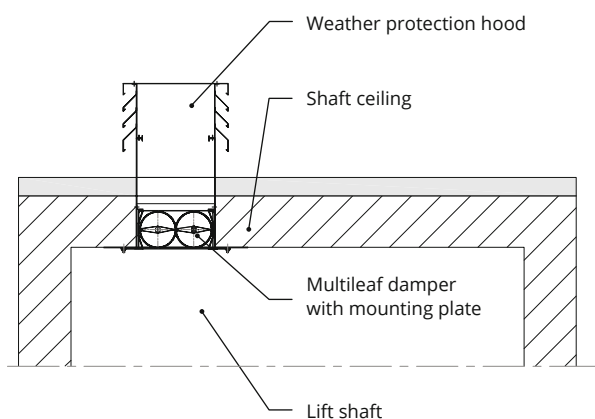
Please note: If insulation is fitted in the shell opening on-site, the shell opening must be increased by the thickness of the insulation (2 x thickness of insulation)!

Installation & details

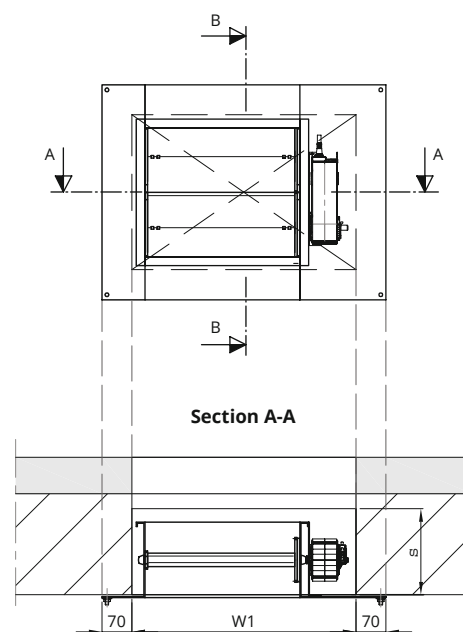
Flush mounted installation
to the side



Flush mounted installation
in the shaft ceiling



Please note:
Weather protection must be installed in the façade on-site. The side smoke extraction must be compliant with building regulations.



MULTILEAF DAMPER JK-165 (flush mounted)

Int. dimensions damper (mm) W x H	360 x 300	400 x 390	440 x 540	540 x 640	640 x 740	840 x 940
Free ventilation cross-section (m ²)	0.10	0.11	0.18	0.29	0.35	0.58
Shell opening (mm) W1 x H1	520 x 360	560 x 450	600 x 600	700 x 700	800 x 800	1000 x 1000
Install. depth multileaf damper (mm)	175	175	175	175	175	175

Different sizes are available on request.

MULTILEAF DAMPER

Attached installation



Product illustration



Additional modules



Louvre weather protection hood



Weather protection grill

Technical specifications:

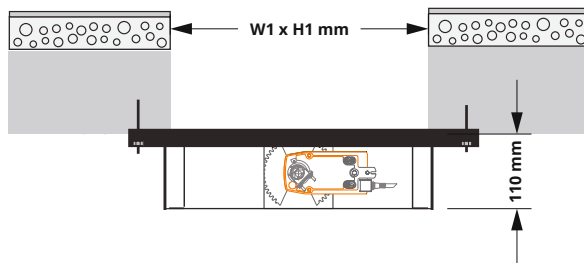
- installation depth / height of damper 110 mm
- dimensions of damper, see table
- meets EnEV air-tightness requirements
- air-tightness class 4
- limit switch for detecting the damper position (OPEN)
- spring return drive (Fail-Safe) with integrated end position monitoring
- streamlined and warp-resistant slats

Additional information:

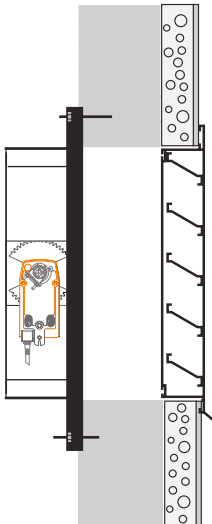
- weather protection required on-site
- installation **in front of the existing opening**, observe 110 mm safety zone in lift shaft head for height of damper!
- designed as NSHEV (according to DIN EN 121010-2)
- approx. 100 mm space required around the shell opening for the installation flange

Installation & details

Installation on the ceiling of the shaft head



Installation on the wall of the shaft



MULTILEAF DAMPER JK-100 (Installation in front of opening)

Int. dimensions damper (mm) W x H	400 x 400	500 x 500	600 x 600	700 x 700	800 x 800	900 x 900
Free ventilation cross-section (m ²)	0.12	0.18	0.26	0.35	0.46	0.58
Shell opening (mm) W1 x H1	400 x 400	500 x 500	600 x 600	700 x 700	800 x 800	900 x 900
Install. depth multileaf damper (mm)	110	110	110	110	110	110

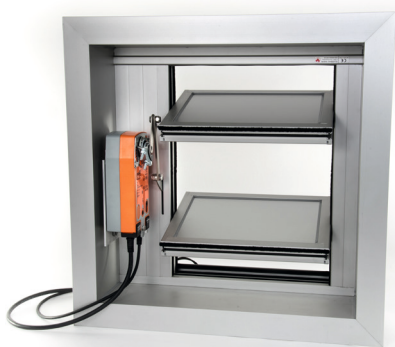
Different dimensions are available on request.

LOUVRE WINDOWS

Type: S9-iV



Product illustration



Additional modules



Louvre weather protection hood



Weather protection grill

Technical specifications:

- integrated flush mounted installation
- very low heat transition coefficient [W/(m² K)]
- thermal insulated aluminium profiles
- limit switch for detecting the damper position (OPEN)
- spring return drive (Fail-Safe) with integrated end position monitoring
- surface standard: ALU anodised
- panel louvres, thermally insulated
- total installation depth in open state: 350 mm

Additional information:

- horizontal and vertical installation position possible
- weather protection necessary for horizontal installation
- anti-burglary (Wk2), ball-proof and noise tested
- designed as NSHEV (according to DIN EN 12101-2) NRWG for both installation positions: horizontal and vertical!



Installation options:

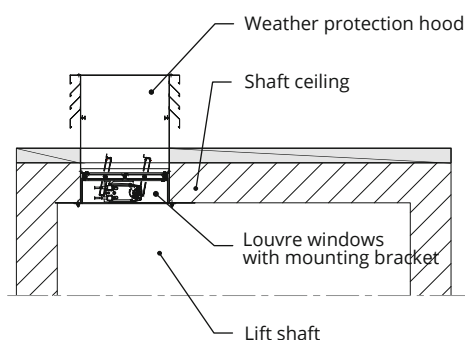
Approved as vertical and horizontal NSHEV



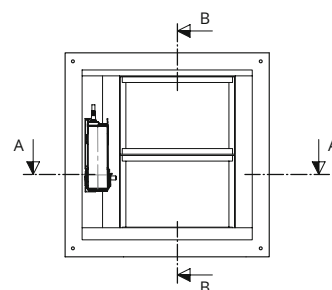
Please note: If insulation is fitted in the shell opening on-site, the shell opening must be increased by the thickness of the insulation (2 x thickness of insulation)!

Installation & details

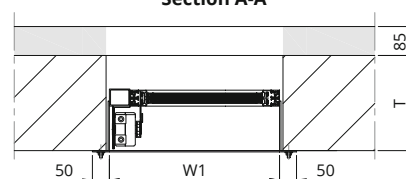
Flush mounted installation in the shaft ceiling



Please note: Weather protection on-site or optionally available from B.A.S.E. Building regulations must be taken into account for the dimensioning.

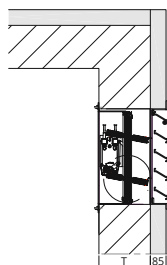


Section A-A

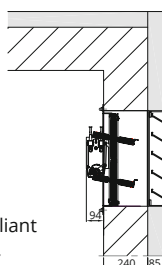


Flush mounted and recessed installation to the side

Bracket 150 x 50
(flush mounted)

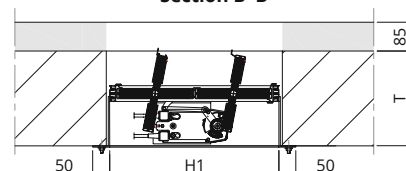


Bracket 50 x 50
(recessed)



Please note: Weather protection must be installed in the façade on-site. The side smoke extraction must be compliant with building regulations.

Section B-B



LOUVRE WINDOW TYPE: S9-IV

(horizontal and vertical installation possible)

Element dimensions (mm) W x H	500 x 500	580 x 580	680 x 680	780 x 780	880 x 880	980 x 980
Free ventilation cross-section (m ²)	0.12	0.18	0.28	0.38	0.51	0.66
Shell opening (mm) W1 x W1	520 x 520	600 x 600	700 x 700	800 x 800	900 x 900	1000x1000
Number of slats	2	2	2	3	3	3
U-value of glass [W/m ² K]	1.10	1.10	1.10	1.10	1.10	1.10
Min. wall thickness T flush mounted	280	300	325	290	305	325s
Min. wall thickness T recessed	180	200	225	190	205	225

Different dimensions are available on request.

EnEV FLAP

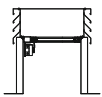
Thermally insulated ventilation
and smoke extraction hood



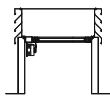
Product illustration



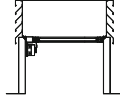
Size variants



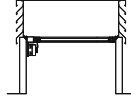
EnEV Flap 500
Size 1



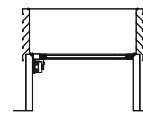
EnEV Flap 600
Size 2



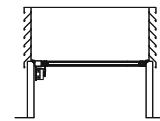
EnEV Flap 700
Size 3



EnEV Flap 800
Size 4



EnEV Flap 900
Size 5



EnEV Flap 1000
Size 6

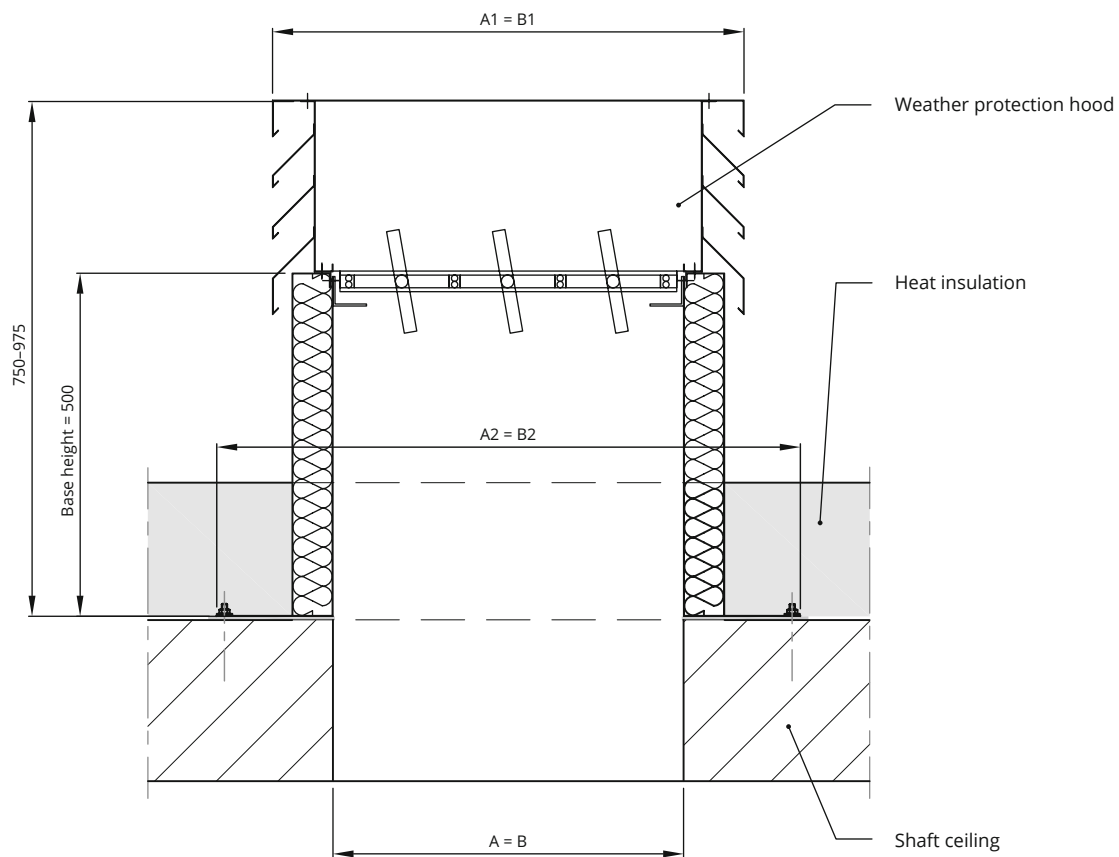
Technical specifications:

- thermally insulated curb
- 4-sided smoke extraction/ventilation opening
- not dependent on wind direction
- integrated bird guard
- puncture-resistant (depending on model)
- closure element designed as louvre window
- closure element designed as NSHEV (in accordance with DIN EN 12101-2)
- 100% weather protection
- limit switch for detecting the damper position (OPEN)
- spring return drive (Fail-Safe) with integrated end position monitoring

Additional information:

- Distance required between top of base and water-bearing layer: min. 250 mm roofing guidelines
- The ventilation and smoke extraction hood must be installed, fixed in place and sealed on site!
- The integrated louvre window is connected to the electricity as part of the installation of the SHEV system.
- Meets LBO and DIN EN 81-20 requirements
- Can also be provided without the closure element as a weather protection hood
- Specialist installation and wind protection on-site

Installation & details



EnEV FLAP

Ventilation and smoke extraction hood

Size of the shell opening (mm) A x B	520 x 520	600 x 600	700 x 700	800 x 800	900 x 900	1000 x 1000
Free ventilation cross-section (m ²)	0.12	0.18	0.28	0.38	0.51	0.66
Ext. dimensions hood (mm) A1 x B1	700 x 700	780 x 780	880 x 880	980 x 980	1080 x 1080	1180 x 1180
Ext. dimensions flange (mm) A2 x B2	851 x 851	931 x 931	1031 x 1031	1131 x 1131	1231 x 1231	1331 x 1331
U-value of glass [W/m ² K]	1.17	1.18	1.18	1.26	1.26	1.24
Total height of EnEV flap [mm]	750	750	825	825	900	975

Different dimensions are available on request.

JK FLAP (EnEV compliant)

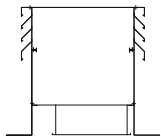
Ventilation and smoke extraction hood



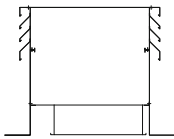
Product illustration



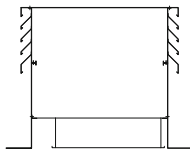
Size variants



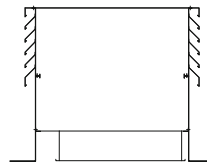
JK Flap 600
Size 1



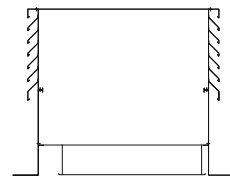
JK Flap 700
Size 2



JK Flap 800
Size 3



JK Flap 900
Size 4



JK Flap 1000
Size 5

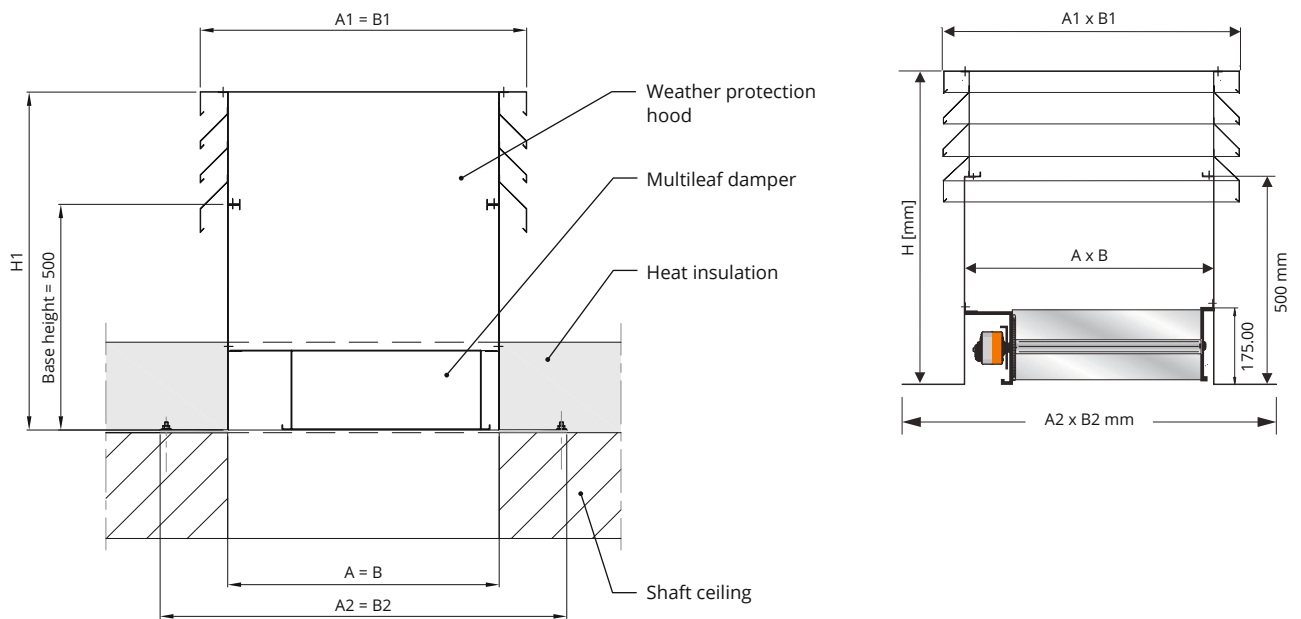
Technical specifications:

- single-layer curb, not thermally insulated
- 4-sided smoke extraction/ventilation opening
- not dependent on wind direction
- integrated bird guard
- puncture-resistant (depending on model)
- closure element in the form of a multileaf damper
- 100% weather protection
- limit switch for detecting the damper position (OPEN)
- spring return drive (Fail-Safe) with integrated end position monitoring
- NSHEV tested in accordance with DIN EN 12101-2

Additional information:

- Distance required between top of base and water-bearing layer: min. 250 mm roofing guidelines
- The ventilation and smoke extraction hood must be installed, fixed in place and sealed on site!
- The integrated multi-leaf damper is connected to the electricity as part of the installation of the SHEV system.
- Meets LBO and DIN EN 81-20 requirements
- Can also be provided without the closure element as a weather protection hood
- Specialist installation and wind protection on-site

Installation & details



JK FLAP					
Ventilation and smoke extraction hood	Size 1	Size 2	Size 3	Size 4	Size 5
Internal dimensions of base (mm) A x B	600 x 600	700 x 700	800 x 800	900 x 900	1000 x 1000
Free ventilation cross-section (m ²)	0.17	0.21	0.34	0.49	0.56
External dimensions of hood (mm) A1 x B1	724 x 724	824 x 824	924 x 924	1024 x 1024	1124 x 1124
Total height of hood (mm) H1	750	750	825	900	900
External dimensions of flange (mm) A2 x B2	902	1002	1102	1202	1302

Different dimensions are available on request.

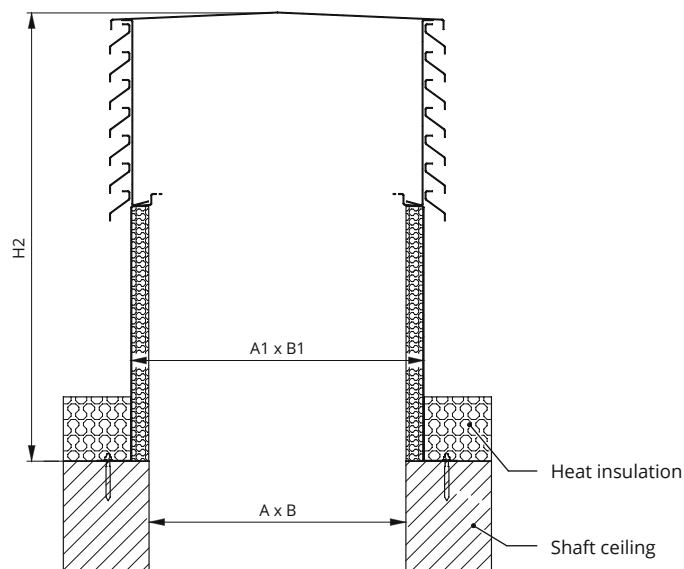
WEATHER PROTECTION HOOD

Insulated

Product illustration



Installation & details



Technical specifications:

- curb insulated with installation flange
- 4-sided smoke extraction/ventilation opening
- not dependent on wind direction
- integrated bird guard
- puncture-resistant (depending on model)
- 100% weather protection
- salt-water-resistant aluminium

Additional information:

- Distance required between top of base and water-bearing layer: min. 250 mm!
- The ventilation and smoke extraction hood must be installed, fixed in place and sealed on site!
- Meets requirements of LBO (but not EnEV)
- Special sizes are available on request

WEATHER PROTECTION HOOD, insulated	Size 1	Size 2	Size 3	Size 4	Size 5
Internal dimensions of base (mm) A x B	500 x 500	600 x 600	700 x 700	800 x 800	900 x 900
Free ventilation cross-section (m ²)	0.29	0.34	0.40	0.45	0.67
External dimensions of hood (mm) A1 x B1	585 x 585	685 x 685	785 x 785	885 x 885	985 x 985

Different dimensions are available on request.

WEATHER PROTECTION GRILLE TYPE 260

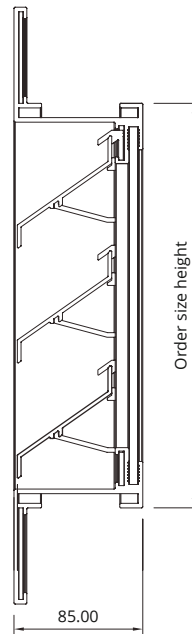
for lift shafts

Product illustration

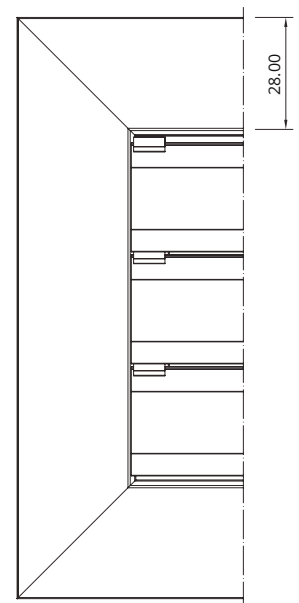


Installation & details

Side view



Front view



Technical specifications:

- conformation of frames and slats in aluminium
- optional surface: anodised / RAL of choice
- application areas: weather protection grill for inset installation e.g.: wall opening
- areas of application: for internal, external area
- installation depth 85 mm

Additional information:

- shell opening: shell opening approx. 5-10 mm larger than order size
- erection: preinstalled frame with mount and slat
- required accessories: mounting screws, mounting brackets, wedge anchors
- optional accessories (on request): fly screens
- free ventilation cross-section: 72 %
- slat distance: 55 mm
- installation must be performed by appropriately trained specialist personnel.

CONTACT



B.A.S.E. GmbH

Pasinger Str. 2
82152 Planegg

Tel: +49 89 54 04 21 80

E-mail: info@base-gmbh.com

➔ **HALL 1 | BOOTH 1140**



Presented by:

Errors and changes excepted

More information: www.schachtrauchung.de